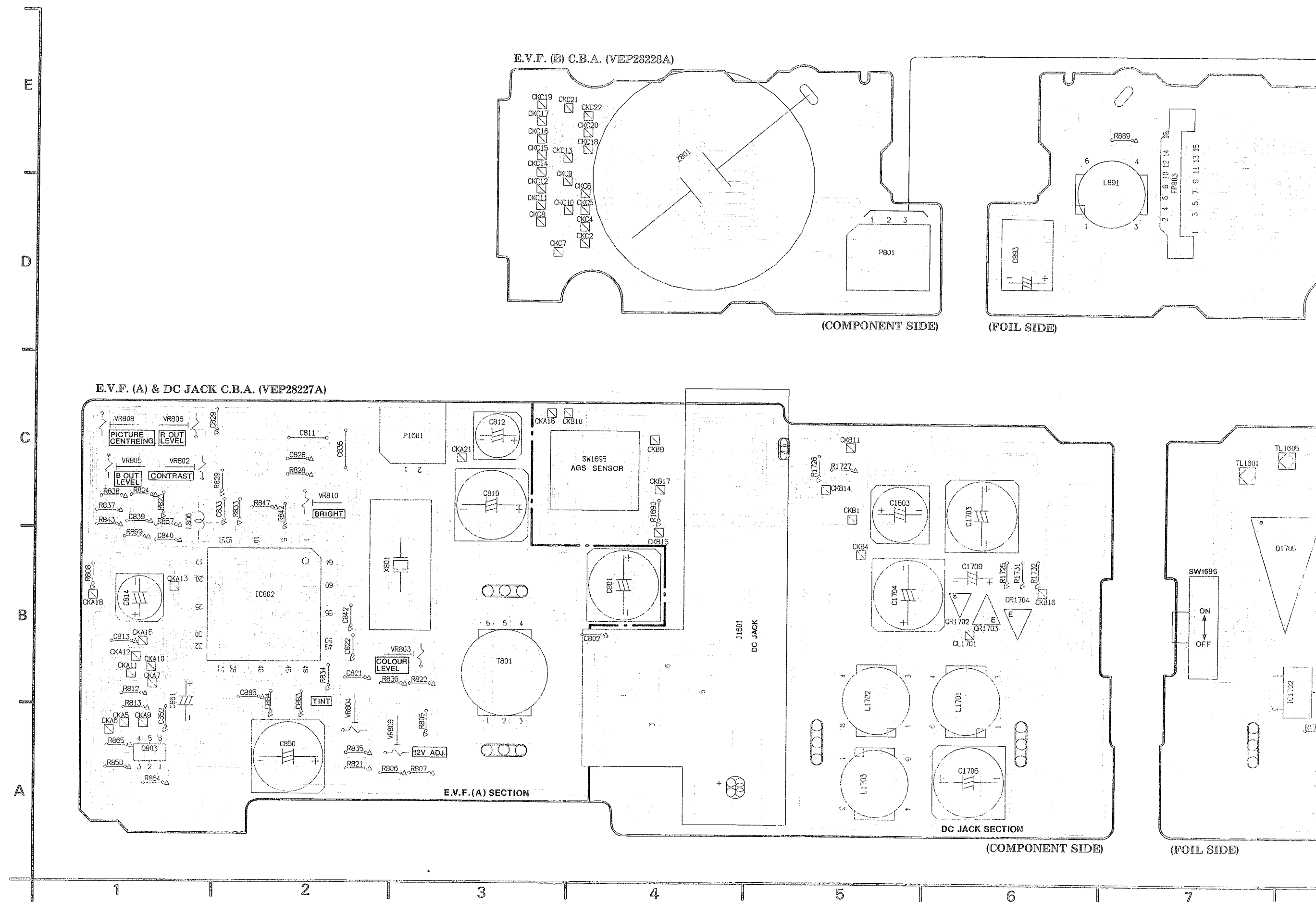
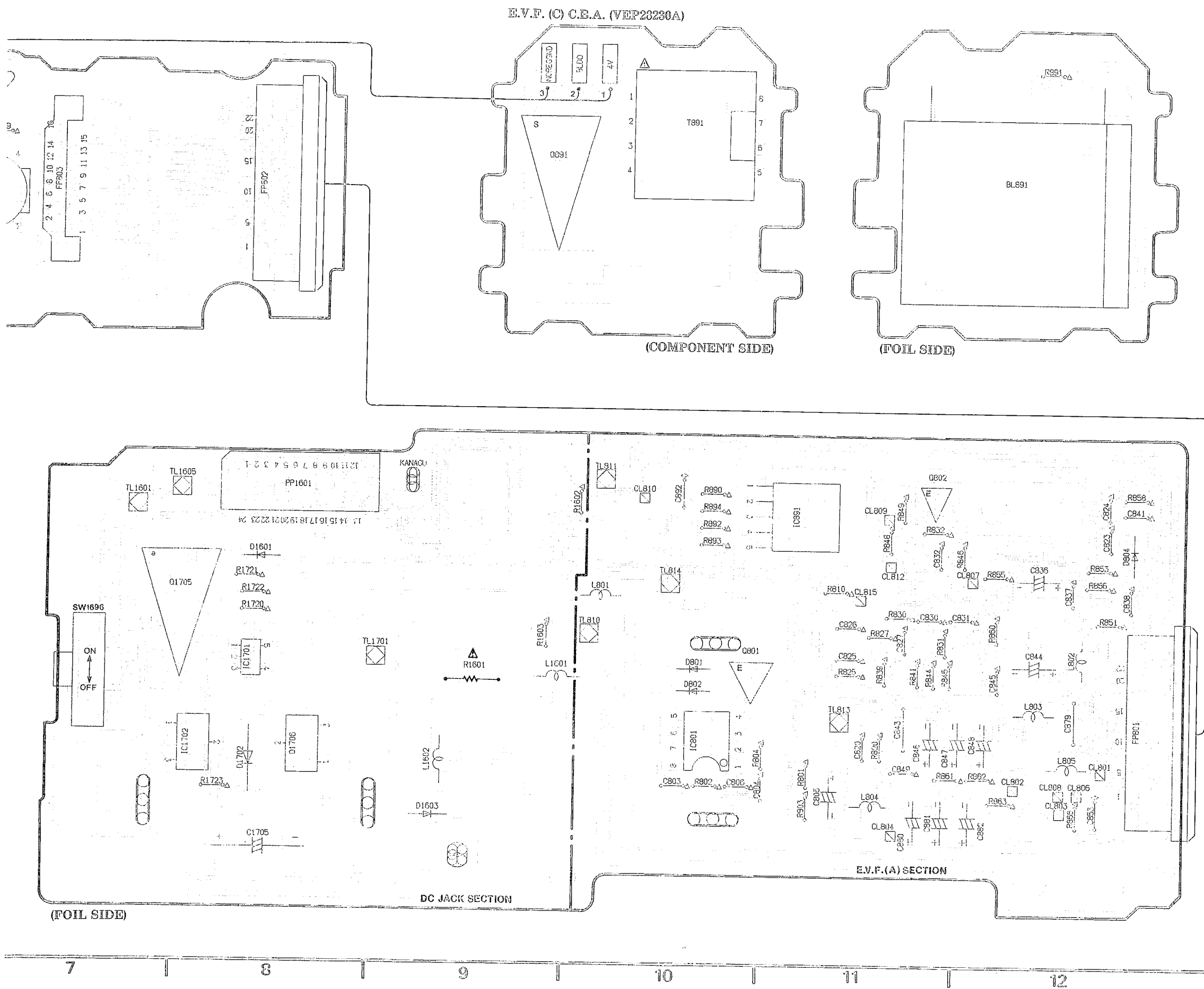


8. E.V.F. (A) & DC JACK C.B.A. (VEP28227A)





E.V.F. (A) & DC JACK C.E.A.	
Integrated Circuit	
IC801	B-10
IC802	B-2
IC891	C-11
IC1701	B-8
IC1702	B-7
Transistor	
Q801	B-10
Q802	C-11
Q803	A-1
Q1705	B-7
Q1706	B-8
Transistor & Resistor	
QR1702	B-6
QR1703	B-6
QR1704	B-6
Test Point	
CL801	A-12
CL802	A-12
CL803	A-12
CL804	A-11
CL806	A-12
CL807	B-11
CL808	A-12
CL809	C-11
CL810	C-10
CL812	C-11
CL815	B-11
CL1701	B-6
TL810	B-10
TL811	C-10
TL813	B-11
TL814	B-10
TL1601	C-7
TL1605	C-7
TL1701	B-8
Adjustment	
VR802	C-1
VR803	B-3
VR804	A-2
VR805	C-1
VR806	C-1
VR808	C-1
VR809	A-3
VR810	C-2
Connector	
FP801	B-12
P1601	C-3
PP1601	C-8

ADDRESS INFORMATION